



6" Straight Square Pole Steel

QPSS6

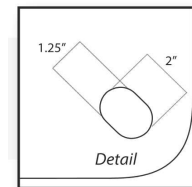
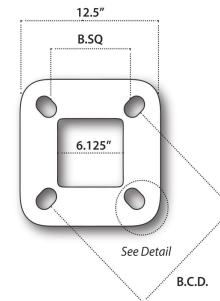
SD - Standard Duty
HD - Heavy Duty

| Catalogue No | Pole Ht (ft) | Pole Wt (lbs) | Wall Thick | Pole Type | B.C.D (mm) | Anchor Bit Sz | EPA (SQ FT) Based on Centre Fixture Below Top of Pole | | | |
|------------------|--------------|---------------|--------------|-----------|--------------------|---------------|---|-------------|-------------|-------------|
| | | | | | | | 80 MPH | 90 MPH | 100 MPH | 110 MPH |
| QPSS620SD | 20 | 332 | 0.188 | SD | 273.1-311.2 | 1"X36" | 51.9 | 39.2 | 30.2 | 23.5 |
| QPSS620HD | 20 | 421 | 0.250 | HD | 273.1-311.2 | 1"X36" | 66.0 | 50.3 | 39.2 | 30.9 |
| QPSS624SD | 24 | 390 | 0.188 | SD | 273.1-311.2 | 1"X36" | 40.1 | 29.6 | 22.0 | 16.4 |
| QPSS630SD | 30 | 478 | 0.188 | SD | 273.1-311.2 | 1"X36" | 27.5 | 19.1 | 13.0 | 8.6 |
| QPSS630HD | 30 | 612 | 0.250 | HD | 273.1-311.2 | 1"X36" | 36.9 | 26.5 | 19.0 | 13.5 |
| QPSS636SD | 36 | 565 | 0.188 | SD | 273.1-311.2 | 1"X36" | 17.6 | 10.7 | 5.8 | 2.1 |
| QPSS636HD | 36 | 732 | 0.250 | HD | 273.1-311.2 | 1"X36" | 25.3 | 16.8 | 10.7 | 6.2 |
| QPSS640SD | 40 | 623 | 0.188 | SD | 273.1-311.2 | 1"X36" | 12.0 | 5.9 | 1.6 | N/A |
| QPSS640HD | 40 | 801 | 0.250 | HD | 273.1-311.2 | 1"X36" | 18.8 | 11.3 | 5.9 | 1.9 |
| QPSS644HD | 44 | 878 | 0.250 | HD | 273.1-311.2 | 1"X36" | 13.2 | 6.5 | 1.7 | N/A |

Engineering Data

Max. EPA - Based on centre of fixture below pole top. Inquire with Sales Rep. for further EPA data. Based on sustained wind forces with a 1.3 gust factor
(Example: A pole rated at 80 mph withstands 104 mph gusts)

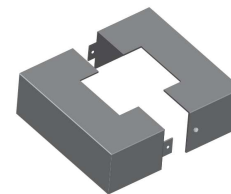
| ORDER ENTRY OPTIONS | | | |
|---|----------------------|----------------------|--|
| Top Tenon | Mounting Side Tenon | Drill Pattern | Finish Power Coated (PC) |
| TT238 2-3/8"x5" | ST1 Single Mount | DP1 Single Head | QPPCBLK - Black (BK50) |
| TT278 2-7/8"x5" | ST2180 2 Heads @ 180 | DP2180 2 Heads @ 180 | QPPCDBZ - Dark Bronze (RAL-8019) |
| TT350 3-1/2"x5" | ST290 2 Heads @ 90 | DP290 2 Heads @ 90 | QPPCGRN - Green (RAL-6005) |
| TT400 4"x5" | ST390 3 Heads @ 90 | DP390 3 Heads @ 90 | QPPCGRY - Grey (RAL-7040) |
| | ST3120 3 Heads @ 120 | DP490 4 Heads @ 90 | QPPCWHT - White (RAL-9003) |
| | ST490 4 Heads @ 90 | | QPPCCC - Custom Colour (Inquire) |
| <i>NOTE: SEE PRICE LIST FOR TENON BRACKET: SQUARE TUBE.</i> | | | <i>PLEASE INQUIRE ABOUT GALVANIZED OPTIONS</i> |
| Mounting | Side Tenon | Drill Pattern | Finish |
| TT | ST | DP | QPPC |



NOTE: PLEASE INQUIRE ABOUT ADDITIONAL POLE HEIGHTS NOT LISTED ABOVE

| ADD-ONS |
|--|
| QPDR - Duplex Receptacle 1110R Box |
| QPSTA - Special Tenon Adapter |
| BA1 - Banner Arm One Side |
| BA2 - Banner Arm Two Side |
| QPTP - Tamper Proof Hardware |
| HHSS - Hand Hole Security Cover (Locking) |
| STANDARD BASE COVER - 2 Piece Base cover (13 x 13 x 4) |
| <u>OTHER OPTIONS AVAILABLE. PLEASE INQUIRE</u> |

| ORDER INFORMATION |
|---------------------|
| Catalogue No: _____ |
| Project: _____ |
| Prepared by: _____ |
| Type: _____ |
| Date: _____ |
| Comments: _____ |
| FIXTURE INFORMATION |
| Quantity: _____ |
| EPA (sq.ft.): _____ |
| Weight (lbs): _____ |



SALES @ QUALITYPOLE.CA

QUALITY . SERVICE . EXPERIENCE . AT ALL TIMES .