



5" Straight Round Pole Steel

QPSR5

SD - Standard Duty
HD - Heavy Duty

Catalogue No	Pole Ht (ft)	Pole Wt (lbs)	Wall Thick	Pole Type	B.C.D. (mm)	Anchor Bit Sz	EPA (SQ FT) Based on Centre Fixture Below Top of Pole			
							80 MPH	90 MPH	100 MPH	110 MPH
QPSR512SD	12	89	0.125	SD	235.0-273.0	1"X36"	24.2	18.5	14.4	11.4
QPSR516SD	16	128	0.125	SD	235.0-273.0	1"X36"	16.4	12.1	9.1	6.8
QPSR520SD	20	154	0.125	SD	235.0-273.0	1"X36"	11.3	7.9	5.5	3.6
QPSR520HD	20	226	0.188	HD	235.0-273.0	1"X36"	18.9	13.9	10.3	7.6
QPSR524SD	24	180	0.125	SD	235.0-273.0	1"X36"	7.6	4.8	2.7	1.2
QPSR524HD	24	265	0.188	HD	235.0-273.0	1"X36"	13.9	9.7	6.7	4.5
QPSR525SD	25	187	0.125	SD	235.0-273.0	1"X36"	6.8	4.1	2.1	0.6
QPSR526SD	26	194	0.125	SD	235.0-273.0	1"X36"	6.1	3.4	1.5	0.1
QPSR526HD	26	284	0.188	HD	235.0-273.0	1"X36"	11.9	8.0	5.3	3.2
QPSR528HD	28	304	0.188	HD	235.0-273.0	1"X36"	10.1	6.5	3.9	2.0
QPSR530HD	30	323	0.188	HD	235.0-273.0	1"X36"	8.4	5.1	2.7	0.9
QPSR534SD	34	362	0.188	SD	235.0-273.0	1"X36"	5.5	2.5	0.4	N/A

Engineering Data

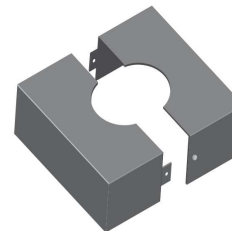
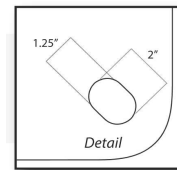
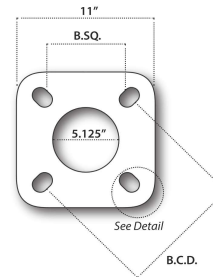
Max. EPA - Based on centre of fixture below pole top. Inquire with Sales Rep. for further EPA data. Based on sustained wind forces with a 1.3 gust factor
(Example: A pole rated at 80 mph withstands 104 mph gusts)

ORDER ENTRY OPTIONS			
Top Tenon	Mounting Side Tenon	Drill Pattern	Finish Power Coated (PC)
TT238 2-3/8"x5"	ST1 Single Mount	DP1 Single Head	QPPCBLK - Black (BK50)
TT278 2-7/8"x5"	ST2180 2 Heads @180	DP2180 2 Heads @ 180	QPPCDBZ - Dark Bronze (RAL-8019)
TT350 3-1/2"x5"	ST290 2 Heads @ 90	DP290 2 Heads @ 90	QPPCGRN - Green (RAL-6005)
TT400 4"x5"	ST390 3 Heads @ 90	DP390 3 Heads @ 90	QPPCGRY - Grey (RAL-7040)
	ST3120 3 Heads @ 120	DP3120 3 Heads @ 120	QPPCWHT - White (RAL-9003)
	ST490 4 Heads @ 90	DP490 4 Heads @ 90	QPPCC - Custom Colour (Inquire)
NOTE: SEE PRICE LIST FOR TENON BRACKET: SQUARE TUBE.			PLEASE INQUIRE ABOUT GALVANIZED OPTIONS
Mounting	Side Tenon	Drill Pattern	Finish
TT	ST	DP	QPPC

NOTE: PLEASE INQUIRE ABOUT ADDITIONAL POLE HEIGHTS NOT LISTED ABOVE

ADD-ONS
QPDR - Duplex Receptacle 1110R Box
QPSTA - Special Tenon Adapter
BA1 - Banner Arm One Side
BA2 - Banner Arm Two Side
QPTP - Tamper Proof Hardware
HHSS - Hand Hole Security Cover (Locking)
STANDARD BASE COVER - 2 Piece Base cover (11.5 x 11.5 x 4)
OTHER OPTIONS AVAILABLE. PLEASE INQUIRE

ORDER INFORMATION
Catalogue No: _____
Project: _____
Prepared by: _____
Type: _____
Date: _____
Comments: _____
FIXTURE INFORMATION
Quantity: _____
EPA (sq.ft.): _____
Weight (lbs): _____



SALES @ QUALITYPOLE.CA

QUALITY . SERVICE . EXPERIENCE . AT ALL TIMES .