



4" STRAIGHT SQUARE STEEL POLES

QPSS4

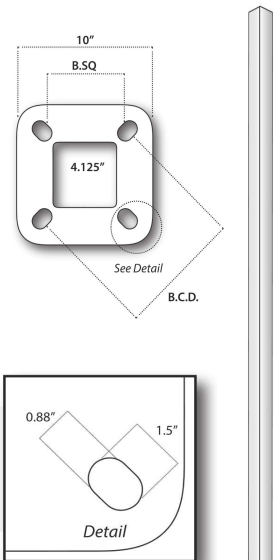
SD - Standard Duty  
HD - Heavy Duty

Catalogue No	Pole Ht (ft)	Pole Wt (lbs)	Wall Thick	Pole Type	B.C.D. (in)	Anchor Bolt Sz	EPA (SQ FT) Based on Centre Fixture Below Top of Pole			
							80 MPH	90 MPH	100 MPH	110 MPH
QPSS412SD	12	99	0.125	SD	8.25-9.75	3/4"X24"	26.3	20.1	15.6	12.3
QPSS415SD	15	118	0.125	SD	8.25-9.75	3/4"X24"	19.6	14.6	11.0	8.4
QPSS416SD	16	124	0.125	SD	8.25-9.75	3/4"X24"	17.8	13.1	9.7	7.3
QPSS418SD	18	137	0.125	SD	8.25-9.75	3/4"X24"	14.7	10.6	7.6	5.4
QPSS420SD	20	150	0.125	SD	8.25-9.75	3/4"X24"	12.2	8.4	5.8	3.8
<b>QPSS420HD</b>	<b>20</b>	<b>210</b>	<b>0.188</b>	<b>HD</b>	<b>8.25-9.75</b>	<b>3/4"X24"</b>	<b>19.9</b>	<b>14.5</b>	<b>10.7</b>	<b>7.8</b>
QPSS422SD	22	167	0.125	SD	8.25-9.75	3/4"X24"	10.0	6.6	4.1	2.3
QPSS424SD	24	176	0.125	SD	8.25-9.75	3/4"X24"	8.1	4.9	2.7	1.1
<b>QPSS424HD</b>	<b>24</b>	<b>248</b>	<b>0.188</b>	<b>HD</b>	<b>8.25-9.75</b>	<b>3/4"X24"</b>	<b>14.5</b>	<b>10.0</b>	<b>6.8</b>	<b>4.5</b>
QPSS425SD	25	182	0.125	SD	8.25-9.75	3/4"X24"	7.2	4.2	2.0	0.5
QPSS428SD	28	202	0.125	SD	8.25-9.75	3/4"X24"	4.8	2.1	0.2	N/A
<b>QPSS428HD</b>	<b>28</b>	<b>286</b>	<b>0.188</b>	<b>HD</b>	<b>8.25-9.75</b>	<b>3/4"X24"</b>	<b>10.3</b>	<b>6.5</b>	<b>3.7</b>	<b>1.7</b>
QPSS430SD	30	215	0.125	SD	8.25-9.75	3/4"X24"	3.4	0.9	N/A	N/A
<b>QPSS430HD</b>	<b>30</b>	<b>305</b>	<b>0.188</b>	<b>HD</b>	<b>8.25-9.75</b>	<b>3/4"X24"</b>	<b>8.5</b>	<b>5.0</b>	<b>2.4</b>	<b>0.5</b>

Engineering Data

Max. EPA - Based on centre of fixture below pole top. Inquire with Sales Rep. for further EPA data. Based on sustained wind forces with a 1.3 gust factor  
(Example: A pole rated at 80 mph withstands 104 mph gusts)

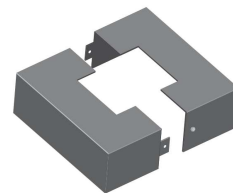
ORDER ENTRY OPTIONS			
Top Tenon	Mounting Side Tenon	Drill Pattern	Finish Power Coated (PC)
TT238 2-3/8"x5"	ST1 Single Mount	DP1 Single Head	QPPCBLK - Black (BK50)
TT278 2-7/8"x5"	ST2180 2 Heads @180	DP2180 2 Heads @ 180	QPPCDBZ - Dark Bronze (RAL-8019)
TT350 3-1/2"x5"	ST290 2 Heads @ 90	DP290 2 Heads @ 90	QPPCGRN - Green (RAL-6005)
TT400 4"x5"	ST390 3 Heads @ 90	DP390 3 Heads @ 90	QPPCGRY - Grey (RAL-7040)
	ST3120 3 Heads @ 120	DP490 4 Heads @ 90	QPPCWHT - White (RAL-9003)
	ST490 4 Heads @ 90		QPPCCC - Custom Colour (Inquire)
<i>NOTE: SEE PRICE LIST FOR TENON BRACKET: SQUARE TUBE.</i>		<i>PLEASE INQUIRE ABOUT GALVANIZED OPTIONS</i>	
Mounting	Side Tenon	Drill Pattern	Finish
TT	ST	DP	QPPC



NOTE: PLEASE INQUIRE ABOUT ADDITIONAL POLE HEIGHTS NOT LISTED ABOVE

ADD-ONS
QPDR - Duplex Receptacle 1110R Box
QPSTA - Special Tenon Adapter
BA1 - Banner Arm One Side
BA2 - Banner Arm Two Side
QPTP - Tamper Proof Hardware
HHSS - Hand Hole Security Cover (Locking)
STANDARD BASE COVER - 2 Piece Base cover (10.5 x 10.5 x 4)
<b>OTHER OPTIONS AVAILABLE. PLEASE INQUIRE</b>

ORDER INFORMATION
Catalogue No:
Project:
Prepared by:
Type:
Date:
Comments:
FIXTURE INFORMATION
Quantity:
EPA (sq.ft.):
Weight (lbs):



SALES @ QUALITYPOLE.CA

QUALITY . SERVICE . EXPERIENCE . AT ALL TIMES .